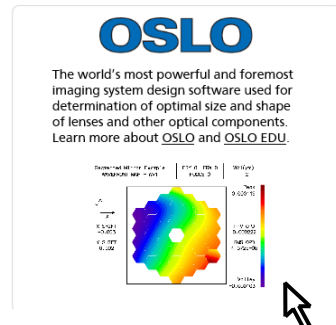


# DOWNLOADING AND INSTALLING OSLO-EDU

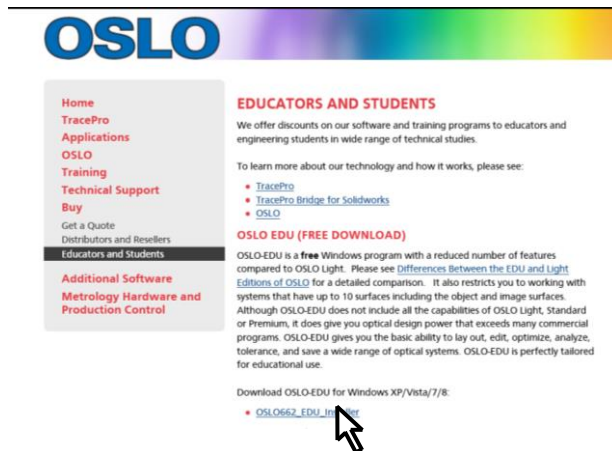
## Downloading OSLO EDU

- Using an internet browser access the Lambda Research Corporation website at <http://www.lambdare.com>
- Find the panel in the bottom right hand corner and click on **OSLO EDU**.



- A new page will open.

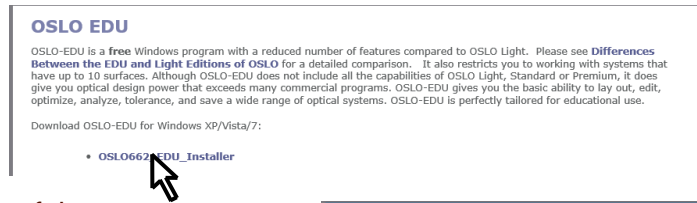
- Under the heading **OSLO EDU (FREE DOWNLOAD)** there is a line which reads **OSLO662 EDU Installer**



- Click on **Download it here**.

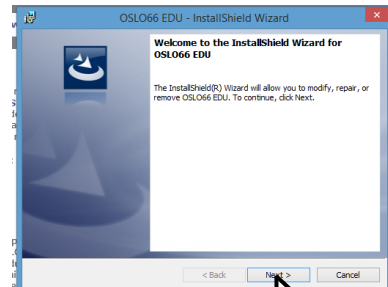
- The page which opens is headed **OSLO EDU**

- You will notice that there are links to download the **OSLO User Guide (4Mb)** and the **OSLO Optics Reference (4.4Mb)**. You can come back to these later. The first of these is particularly useful.



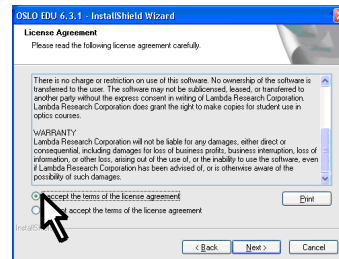
- Under **Download OSLO-EDU for Windows XP/Vista/7** (OSLO also works on Windows 8) click on **OSLO6XX\_EDU\_Installer**

- A security warning will appear, asking if you want to run or save **OSLO6XX\_EDU\_installer.exe (18.5MB)**. Click on **Save** to allow it then click on **Run**. This next panel should appear.



## Installing OSLO EDU in a Windows environment

- Before you proceed with installing OSLO you will be offered the choice to **install Notepad++**.
- Click **Next** and left click on **☉ I accept the terms of the license agreement**
- Choose a location for it to install
- Click on **Install** and then **Finish**. It should then continue with the installation of OSLO.
- Left-click on **Next>**
- Read the License Agreement and left click on **☉ I accept the terms of the license agreement**
- Left-click on **Next>**
- Select an appropriate installation location.



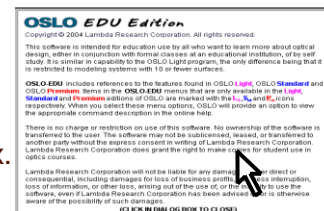
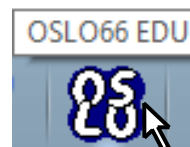
The default directory for OSLO EDU 6.6 (for example) is **C:\Program Files (x86)\Lambda Research Corporation\OSLO6x EDU\OSLOedu.exe**. Private user files (.len and .ccl etc) will be stored in the **C:\users\your\_name\Documents\OSLO\EDU6x private\** directory. Public files will be stored in the **C:\users\public\OSLO\EDU6x public\** directory.

- Left-click on **Next> ]**
- Begin the installation. Left-click on **Install>**
- Wait for the program to be set up on your computer.
- Once the installation has completed successfully, left-click on **Finish**.

## Running OSLO EDU

To run OSLO EDU:

- EITHER**
  - Click on the shortcut
- OR**
  - Locate the .exe file (see above)
- The program opens with an introductory dialog box. Click anywhere in the box to close it.

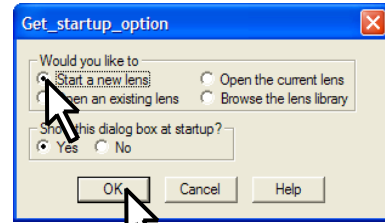


- If a message about re-building the CCL database appears, click on **OK**



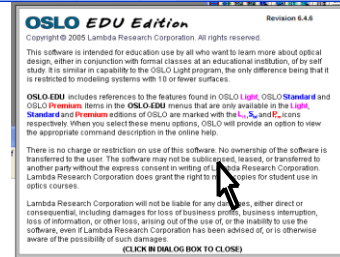
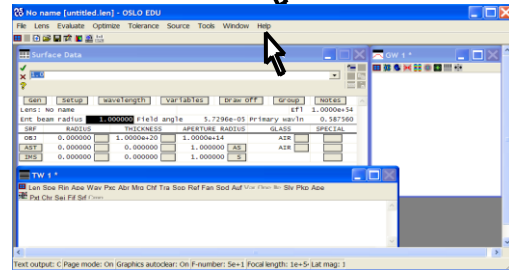
- The “Tip of the Day” is a useful tutorial for new users. Click on **Close**. Alternatively it can be suppressed permanently by removing the tick from the box in the bottom left corner.

- The **Get\_startup\_option** window opens.
- Choose the option: **Start a new lens** and click on **OK**



The OSLO main window should look similar to that shown in the diagram.

- In the headers, click on **Help**. The dialog box which opens gives the version and the revision number in the top right hand corner.
- Click anywhere in the box to close it.



### Compiling the CCL libraries

- In the headers, click on **Tools**.
- Click on **Compile CCL ...**
- In the command window, under the heading **Select compile access**, select **Private** and click on the green tick mark.
- Accept the default option **ALL** and click on the green tick mark.
- Accept the default option **-D\_OSLO\_EDU\_ -D\_OSLO\_LIGHT\_ -D\_OPENGL\_GRAPHICS** and click on the green tick mark.
- Repeat everything in this section for the **Public** directory.
- Two successful compilation messages should appear as shown.
- OSLO EDU is now ready for use.

